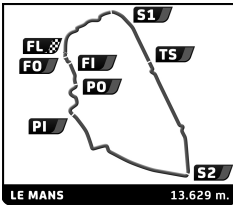


ROAD TO LE MANS

18 JUN 2016



Computerised results and timing service

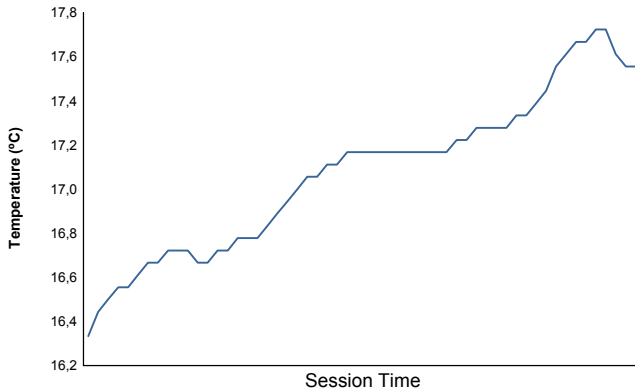
84° Edition des 24 Heures du Mans

ROAD TO LE MANS

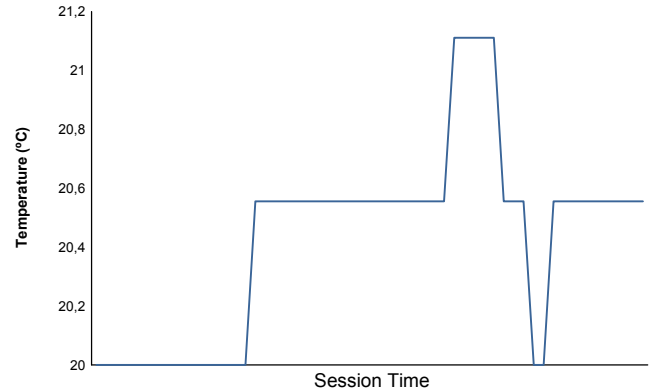
Race

Weather Report

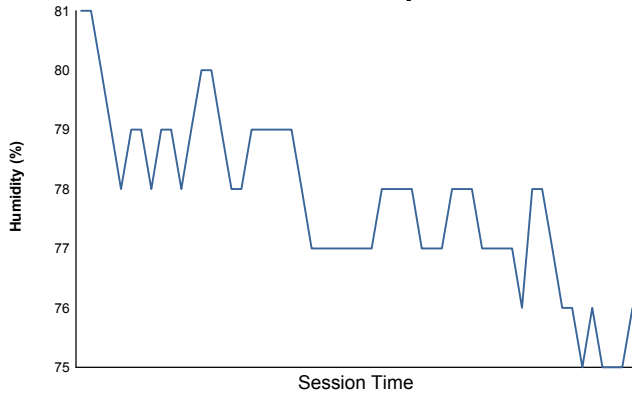
Air Temperature



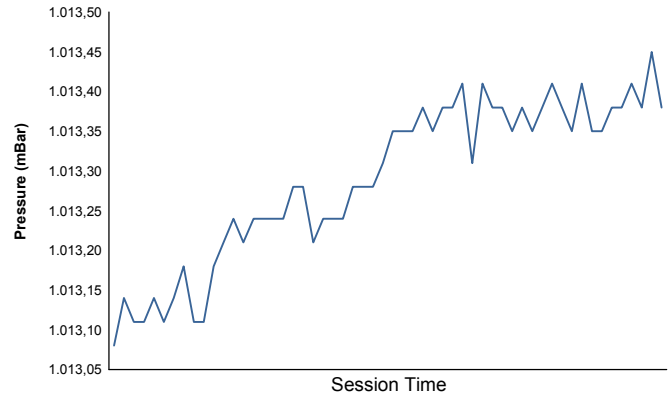
Track Temperature



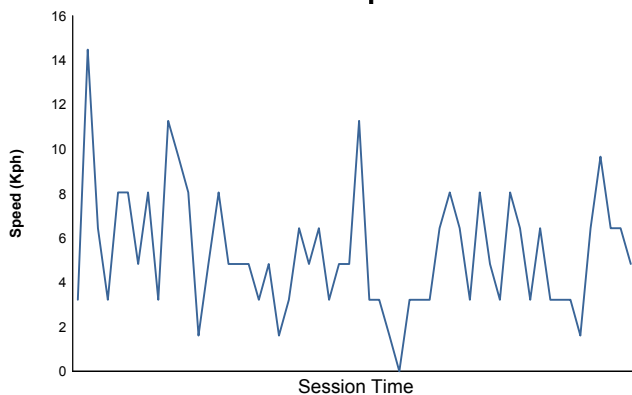
Humidity



Pressure

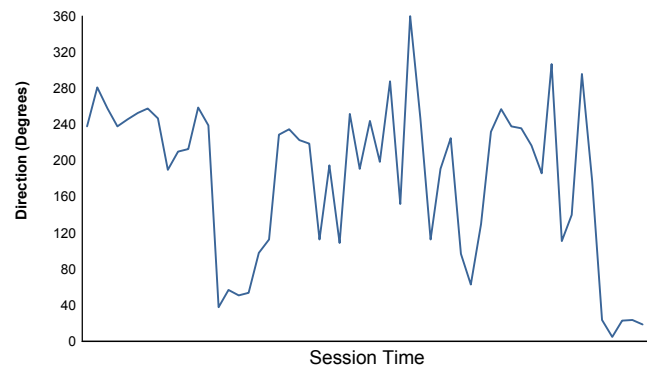


Wind Speed



Wind direction

North = 0°/360° Est = 90° South = 180° West = 270°



Track Status:

DRY